

# F2 ADAPTOR HYBRID BULLS

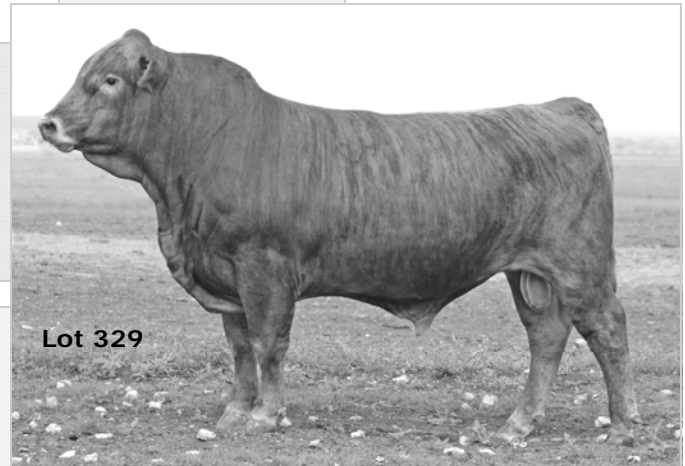
**Lot 329 begins this year's offering of Second Generation, or F2, Vista Adaptor Hybrid bulls.**

These bulls are produced by mating Adaptor Hybrid females to some of the highest IMF ratio Adaptor Hybrid bulls that we raise. These calves were produced and raised in a purely commercial setting, so complete pedigrees are not available for all of them. Their dams are not registered, so EPDs are also not generated for these bulls.

*They are, however, culled mercilessly ...*

*... we started with 82 bull calves to get to the 19 head in this year's offering.*

<b>329</b>	TATTOO <b>8146</b>	<b>VISTA F2 ADAPTOR 8146</b>	
POLLED	REA 112.7	DOB 3/10/2008	
FRAME VGR	R/CWT 97.3	SCROTAL 37	
5.4 115.3	IMF 91.9	WEIGHT 1546	
SIRE	MULTIPLE BRAUNVIEH SIRE	DAM	MULTIPLE RED ANGUS SIR
	MULTIPLE ADAPTOR SIRE		UNIDENTIFIED ADAPTOR DAM
	RED ANGUS COW		MULTIPLE BRAUNVIEH DAM



Lot 329

<b>330</b>	TATTOO <b>8133</b>	<b>VISTA F2 ADAPTOR 8133</b>	
SCURRED	REA 105.3	DOB 3/8/2008	
FRAME VGR	R/CWT 106.9	SCROTAL 37	
4.2 96.2	IMF 100.2	WEIGHT 1362	
SIRE	MULTIPLE BRAUNVIEH SIRE	DAM	VISTA ARTURO 18Z G504 E
	MULTIPLE ADAPTOR SIRE		VB G504 238 2204
	RED ANGUS COW		LH HELEN 238

<b>331</b>	TATTOO <b>8123</b>	<b>VISTA F2 ADAPTOR 8123</b>	
POLLED	REA 99.7	DOB 3/6/2008	
FRAME VGR	R/CWT 91.1	SCROTAL 40	
5.6 92.8	IMF 97.4	WEIGHT 1416	
SIRE	MULTIPLE BRAUNVIEH SIRE	DAM	MULTIPLE RED ANGUS SIR
	MULTIPLE ADAPTOR SIRE		UNIDENTIFIED ADAPTOR DAM
	RED ANGUS COW		MULTIPLE BRAUNVIEH DAM

<b>332</b>	TATTOO <b>8103</b>	<b>VISTA F2 ADAPTOR 8103</b>	
SCURRED	REA 95.3	DOB 2/26/2008	
FRAME VGR	R/CWT 86.1	SCROTAL 39	
5.0 114.3	IMF 89.1	WEIGHT 1460	
SIRE	MULTIPLE BRAUNVIEH SIRE	DAM	RABR MAKE MY DAY H6000
	MULTIPLE ADAPTOR SIRE		VB F1 H6000 L419 3454
	RED ANGUS COW		VISTA E585 H622 L419

<b>333</b>	TATTOO <b>8239</b>	<b>VISTA F2 ADAPTOR 8239</b>	
POLLED	REA 98.2	DOB 4/1/2008	
FRAME VGR	R/CWT 95.8	SCROTAL 40	
5.4 111.8	IMF 97.4	WEIGHT 1358	
SIRE	MULTIPLE BRAUNVIEH SIRE	DAM	MULTIPLE RED ANGUS SIR
	MULTIPLE ADAPTOR SIRE		UNIDENTIFIED ADAPTOR DAM
	RED ANGUS COW		MULTIPLE BRAUNVIEH DAM



Lot 330

Lot 329 is truly impressive both in type and performance. In fact, the only things he may be missing are the ends of his ears.

Lot 330 is another with the right type. Thick, deep and long - powerful, yet smooth at the same time. Lot 331 is smooth polled, and exceptionally thick. He's equipped to breed lots of cows and conditioned (just like all the rest) to thrive in whatever environment you have for him.

Lots 332 and 333 are very similar - more butts guts and nuts. Both performed well above average for growth on test.

# F2 ADAPTOR HYBRID BULLS

Lot 334 is extra long with plenty of thickness. He is all Braunvieh and Red Angus, but packaged a little more like a South Texas native with a touch extra leather and stretch.

Lot 335 is just as thick in person as his ultrasound suggests. He is a meat wagon with better than average marbling potential.

Lot 336 starts another run of black Adaptors, and in a big way with all the right numbers. He is stout and smooth at the same time.

Lot 337 is almost a carbon copy of the previous bull in every respect. They would make quite the pair to turn out together.

Lot 338 is another of the same kind on a little smaller frame. He is deep bodied and loaded with muscle.



Lot 334

<b>334</b>	TATTOO	<b>VISTA F2 ADAPTOR 8186</b>			
	<b>8186</b>				
SCURRED		REA	96.3	DOB	3/1/2008
FRAME	VGR	R/CWT	98.4	SCROTAL	38
4.7	108.1	IMF	100.2	WEIGHT	1402
SIRE		MULTIPLE BRAUNVIEH SIRES		DAM	
MULTIPLE ADAPTOR SIRES		RED ANGUS COW		MULTIPLE RED ANGUS SIRE	
				UNIDENTIFIED ADAPTOR DAM	
				MULTIPLE BRAUNVIEH DAM	

<b>335</b>	TATTOO	<b>VISTA F2 ADAPTOR 8170</b>			
	<b>8170</b>				
SCURRED		REA	109.6	DOB	3/11/2008
FRAME	VGR	R/CWT	111.0	SCROTAL	33
4.5	96.3	IMF	105.8	WEIGHT	1309
SIRE		MULTIPLE BRAUNVIEH SIRES		DAM	
MULTIPLE ADAPTOR SIRES		RED ANGUS COW		RABR CANYON 704	
				VB 704 H439 0465	
				VISTA UNA F335 H439	



Lot 336

<b>336</b>	TATTOO	<b>VISTA F2 ADAPTOR BLK 8105</b>			
	<b>8105</b>				
SCURRED		REA	101.2	DOB	2/27/2008
FRAME	VGR	R/CWT	89.2	SCROTAL	40
5.5	111.4	IMF	119.7	WEIGHT	1496
SIRE		MULTIPLE BRAUNVIEH SIRES		DAM	
MULTIPLE ADAPTOR SIRES		RED ANGUS COW		MR GOLDEN LINK 2597	
				VISTA B2597 313 5902	
				313	

<b>337</b>	TATTOO	<b>VISTA F2 ADAPTOR BLK 8227</b>			
	<b>8227</b>				
SCURRED		REA	98.9	DOB	3/29/2008
FRAME	VGR	R/CWT	95.4	SCROTAL	35
5.7	118.2	IMF	105.8	WEIGHT	1496
SIRE		MULTIPLE BRAUNVIEH SIRES		DAM	
MULTIPLE ADAPTOR SIRES		RED ANGUS COW		RAB 1407- 481M	
				VB 481M E551S 5463	
				KDG EVE E551	



Lot 338

<b>338</b>	TATTOO	<b>VISTA F2 ADAPTOR BLK 8166</b>			
	<b>8166</b>				
SCURRED		REA	101.4	DOB	3/11/2008
FRAME	VGR	R/CWT	106.1	SCROTAL	36
4.6	100.1	IMF	103.0	WEIGHT	1366
SIRE		MULTIPLE BRAUNVIEH SIRES		DAM	
MULTIPLE ADAPTOR SIRES		RED ANGUS COW		SWISS-WAY CHINOOK 2	
				VB F1 3C 752 3103	
				RABR WIDE LOAD 752	

# F2ADAPTOR HYBRID BULLS

It was next to impossible to sort this year's sale order in these black Adaptor bulls.

Lot 339 could have found a home at Vista as a herd sire, if we could figure out his pedigree. He has all the looks, and the performance that many purebred bulls lack. Help yourself to a front pasture bull here.

Lots 340, 341, 342, 343 and 344 are more of the same kind of black bulls. Solid performance, desirable type and conditioned to keep working for many years.

<b>339</b>	TATTOO <b>8134</b>	<b>VISTA F2 ADAPTOR BLK 8134</b>	
POLLED		REA 103.0	DOB 3/8/2008
FRAME	VGR	R/CWT 101.2	SCROTAL 38
4.8	103.9	IMF 103.0	WEIGHT 1438
SIRE	MULTIPLE BRAUNVIEH SIRES	DAM	MULTIPLE RED ANGUS SIR
MULTIPLE ADAPTOR SIRES		UNIDENTIFIED ADAPTOR DAM	
RED ANGUS COW		MULTIPLE BRAUNVIEH DAM	



Lot 339

<b>340</b>	TATTOO <b>8231</b>	<b>VISTA F2 ADAPTOR BLK 8231</b>	
SCURRED		REA 97.4	DOB 3/29/2008
FRAME	VGR	R/CWT 99.5	SCROTAL 40
5.2	97.7	IMF 105.8	WEIGHT 1354
SIRE	MULTIPLE BRAUNVIEH SIRES	DAM	MULTIPLE RED ANGUS SIR
MULTIPLE ADAPTOR SIRES		UNIDENTIFIED ADAPTOR DAM	
RED ANGUS COW		MULTIPLE BRAUNVIEH DAM	



Lot 340

<b>341</b>	TATTOO <b>8248</b>	<b>VISTA F2 ADAPTOR BLK 8248</b>	
POLLED		REA 90.0	DOB 4/12/2008
FRAME	VGR	R/CWT 92.4	SCROTAL 38
6.1	111.0	IMF 100.2	WEIGHT 1232
SIRE	MULTIPLE BRAUNVIEH SIRES	DAM	VRA 1961 1153 J122
MULTIPLE ADAPTOR SIRES		VB J122 K494 2418	
RED ANGUS COW		VISTA 77C C8304 K494	

<b>342</b>	TATTOO <b>8178</b>	<b>VISTA F2 ADAPTOR BLK 8178</b>	
POLLED		REA 93.3	DOB 3/14/2008
FRAME	VGR	R/CWT 92.3	SCROTAL 37
4.6	101.6	IMF 97.4	WEIGHT 1244
SIRE	MULTIPLE BRAUNVIEH SIRES	DAM	KERHOLM STAFF ET
MULTIPLE ADAPTOR SIRES		VB F1 11Z D080 0119	
RED ANGUS COW		MS NEO-SHO BUFCRK D080	



Lot 343

<b>343</b>	TATTOO <b>8200</b>	<b>VISTA F2 ADAPTOR BLK 8200</b>	
POLLED		REA 88.4	DOB 3/18/2008
FRAME	VGR	R/CWT 88.5	SCROTAL 40
5.6	98.0	IMF 86.3	WEIGHT 1368
SIRE	MULTIPLE BRAUNVIEH SIRES	DAM	SWISS-WAY CHINOOK 2
MULTIPLE ADAPTOR SIRES		VB F1 3C 1166 0012	
RED ANGUS COW		JWJ IMAGE 26 1166	

# F2ADAPTOR HYBRID BULLS

Lots 345 and 346 look black, but they are what we call 'brown'. They have the Braunvieh white muzzle, light hair in their ears and down their back. They do not carry a black gene to pass on to their calves, but they have plenty of what really matters to bestow on their progeny.

Lot 345 is virtually flawless in both type and performance.

Lot 346 is just as thick in person as he measured.

Lot 347 is dun colored, as long as they come, plenty deep, and easy to get along with. He is better than to be last in any sale.



Lot 344

<b>344</b>	TATTOO <b>8196</b>	<b>VISTA F2 ADAPTOR BLK 8196</b>			
SCURRED	REA	94.7	DOB	3/18/2008	
FRAME	VGR	R/CWT	97.2	SCROTAL	37
5.1	82.7	IMF	97.4	WEIGHT	1349
SIRE	MULTIPLE BRAUNVIEH SIRE		DAM	MULTIPLE RED ANGUS SIR	
MULTIPLE ADAPTOR SIRE			VB MAR 239K 8196		
RED ANGUS COW			SC MISS 239K ET		

<b>345</b>	TATTOO <b>8114</b>	<b>VISTA F2 ADAPTOR 8114</b>			
SCURRED	REA	102.7	DOB	3/3/2008	
FRAME	VGR	R/CWT	102.7	SCROTAL	37
4.5	102.3	IMF	119.7	WEIGHT	1306
SIRE	MULTIPLE BRAUNVIEH SIRE		DAM	ALPINE HARI BLU F156 ET	
MULTIPLE ADAPTOR SIRE			VB F156 321 0036		
RED ANGUS COW			LH MAND 321		



Lot 345

<b>346</b>	TATTOO <b>8140</b>	<b>VISTA F2 ADAPTOR 8140</b>			
SCURRED	REA	107.7	DOB	3/10/2008	
FRAME	VGR	R/CWT	104.6	SCROTAL	33
4.9	98.1	IMF	86.3	WEIGHT	1302
SIRE	MULTIPLE BRAUNVIEH SIRE		DAM	VISTA CONCHO 17U F375 E	
MULTIPLE ADAPTOR SIRE			VB F1 F375 B010 2171		
RED ANGUS COW			IMR BB5927 ROJA B010		

<b>347</b>	TATTOO <b>8115</b>	<b>VISTA F2 ADAPTOR 8115</b>			
POLLED	REA	99.4	DOB	3/6/2008	
FRAME	VGR	R/CWT	91.2	SCROTAL	39
5.3	111.0	IMF	89.1	WEIGHT	1392
SIRE	MULTIPLE BRAUNVIEH SIRE		DAM	MULTIPLE RED ANGUS SIR	
MULTIPLE ADAPTOR SIRE			UNIDENTIFIED ADAPTOR DAM		
RED ANGUS COW			MULTIPLE BRAUNVIEH DAM		



Lot 347

